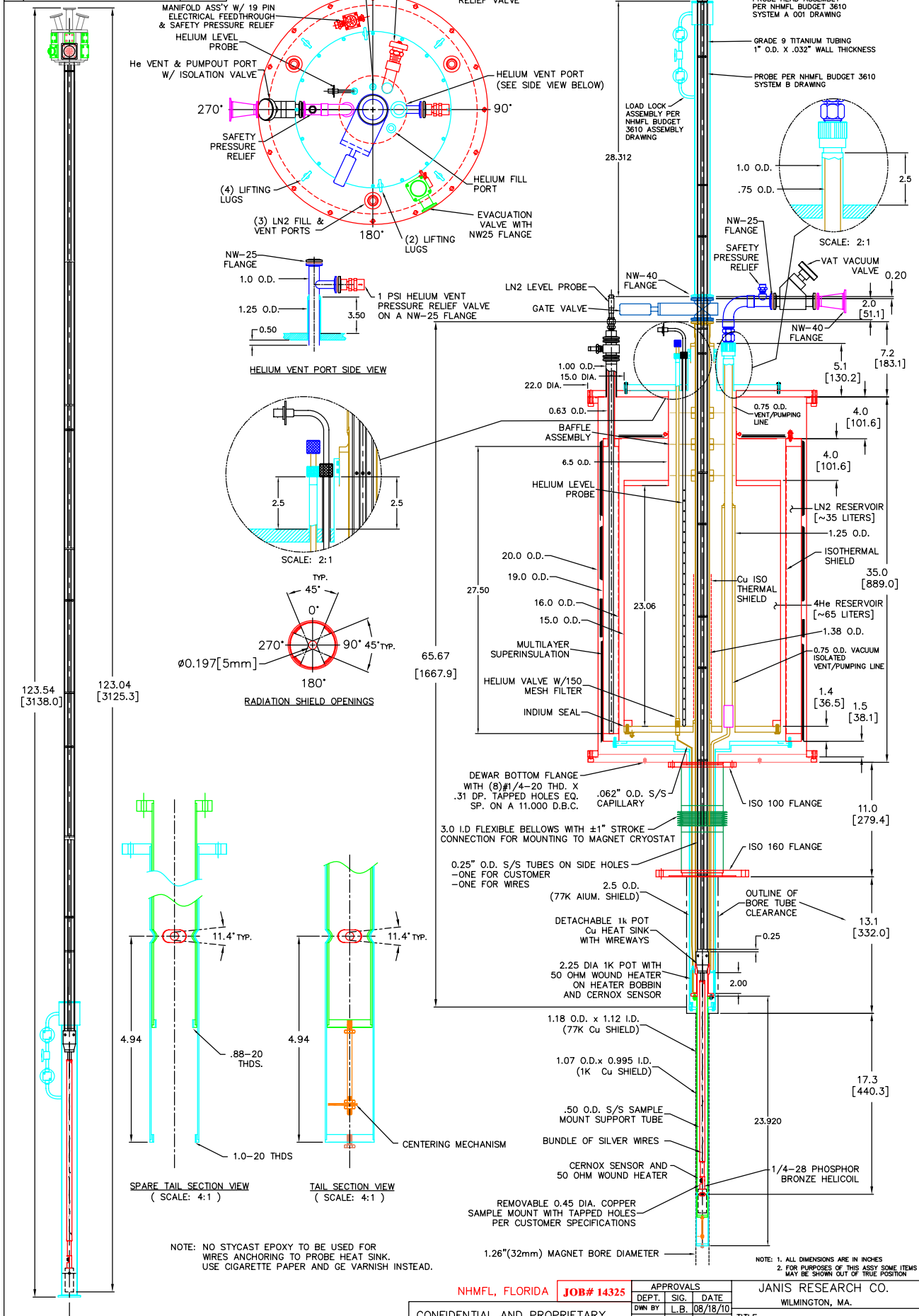


REVISIONS		
LTR	DESCRIPTION	DATE
F	ADDED SPARE TAILS & RELOCATION QUENCH PORT	BF, 02/02/11
G	CHANGED TOP FLANGE & ROTATED 19 PIN PORT	BF, 02/08/11
H	CHANGED ISO-160 FLANGE TO ISO-100 FLANGE	BF, 02/11/11
I	CHANGED HEAT SINK DESIGN	BF, 03/02/11
J	CHANGED TO 32 PIN FEEDTHROUGH	BF, 03/09/11



NOTE: NO STYCAST EPOXY TO BE USED FOR
WIRES ANCHORING TO PROBE HEAT SINK.
USE CIGARETTE PAPER AND GE VARNISH INSTEAD.

NOTE: 1. ALL DIMENSIONS ARE IN INCHES
2. FOR PURPOSES OF THIS ASSY SOME ITEMS
MAY BE SHOWN OUT OF TRUE POSITION

NHMFL, FLORIDA		JOB# 14325		APPROVALS DEPT. SIG. DATE DWN BY LB. 08/18/10 CHK BY		JANIS RESEARCH CO. WILMINGTON, MA.			
CONFIDENTIAL AND PROPRIETARY				ENG. DATE RELEASED TO MFG. BY CUST. APPROVAL BY		TITLE TOP LOADING He-4 CRYOSTAT			
THIS DRAWING AND/OR INFORMATION CONTAINED HEREIN IS THE SOLE PROPERTY OF THE JANIS RESEARCH COMPANY AND IS NOT TO BE RELEASED OR DIVULGED TO THIRD PARTIES WITHOUT THE EXPRESSED, WRITTEN CONSENT OF THE JANIS RESEARCH COMPANY, INC.				SIZE D		DRAWING NO. D08-18-10A		REV. J	
				SCALE: 15/64		SHT 1 OF 1			